



INDOFINE Chemical Company, Inc.

121 Stryker Lane, Bldg. 30, Suite 1 • Hillsborough, NJ 08844 • U.S.A.

Phone: (908) 359-6778 • FAX: (908) 359-1179

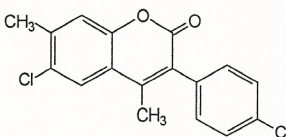
website: www.indofinechemical.com

e-mail: chemical@indofinechemical.com

CERTIFICATE OF ANALYSIS

Cat No.: 19-011

<u>Product:</u>	6-CHLORO-3(4'-CHLOROPHENYL)-4,7-DIMETHYL COUMARIN
<u>Lot Number:</u>	98068
<u>Chemical Formula:</u>	C ₁₇ H ₁₂ Cl ₂ O ₂
<u>Molecular Weight:</u>	319.19
<u>Melting Point:</u>	170-172°C
<u>Appearance:</u>	Pale yellow crystalline solid
<u>Solubility:</u>	Clear solution in chloroform
<u>Storage:</u>	Cool dry place
<u>NMR Spectrum:</u>	Enclosed
<u>Purity (HPLC):</u>	99.87%





INDOFINE Chemical Company, Inc.

121 Stryker Lane, Bldg. 30, Suite 1 • Hillsborough, NJ 08844 • U.S.A.

Phone: (908) 359-6778 • FAX: (908) 359-1179

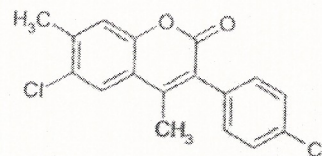
website: www.indofinechemical.com

e-mail: chemical@indofinechemical.com

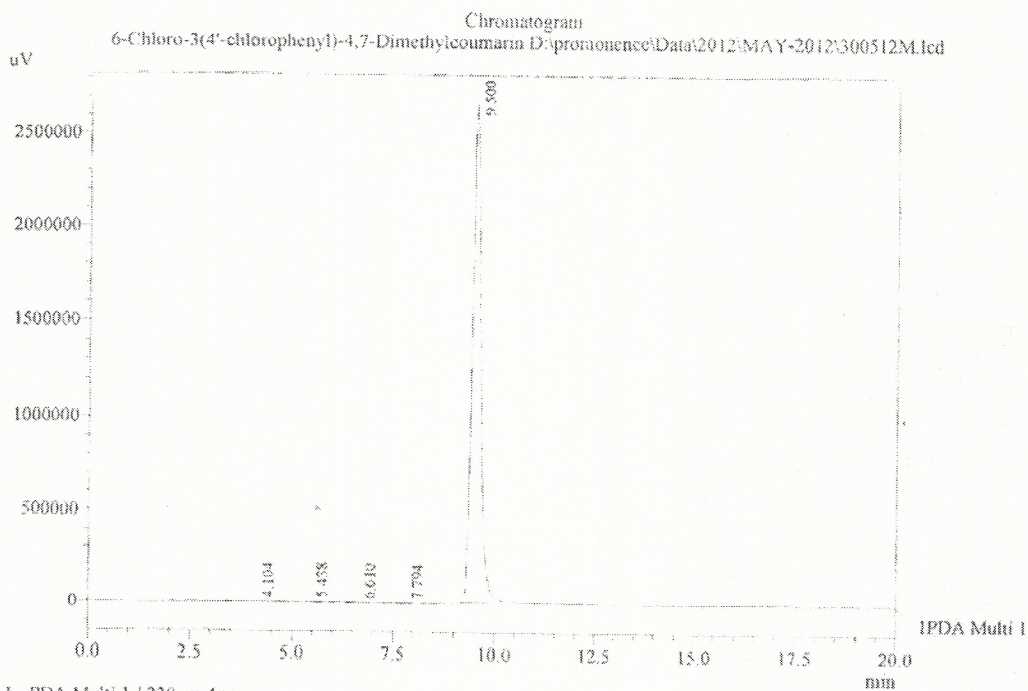
HPLC ANALYSIS

Catalog no.: 19-011
Product name: 6-Chloro-3(4'-chlorophenyl)-4,7-dimethylcoumarin
Lot No.: 98068

Acquired by : Sanjeev
Sample Name : 6-Chloro-3(4'-chlorophenyl)-4,7-Dimethylcoumarin
Sample ID : Lot No:- 98068
Injection Volume : 20 uL
Data Filename : 300512M1.tcd
Method Filename : Linear Isoeratic.M1.tcm



Column : LUNA C-18(2), (250mm x4.6mm 5.0µ)
Flow : 1.000 ml./min.
Mobile Phase : A(20% of 0.05% TFA in water) B(80% of Acetonitrile)



PDA Ch1 230nm 4nm

PeakTable

Peak#	Name	Ret Time	Area	Area %	Relative Retention Time
1	RT:4.104	4.104	6350	0.02	0.43
2	RT:5.438	5.438	20542	0.05	0.57
3	RT:6.610	6.610	8129	0.02	0.70
4	RT:7.794	7.794	15387	0.04	0.82
5	RT:9.500	9.500	38813197	99.87	1.00
Total			38863605	100.00	



INDOFINE Chemical Company, Inc.

121 Stryker Lane, Bldg. 30, Suite 1 • Hillsborough, NJ 08844 • U.S.A.

Phone: (908) 359-6778 • FAX: (908) 359-1179

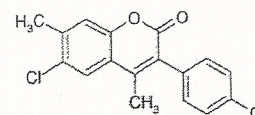
website: www.indofinechemical.com

e-mail: chemical@indofinechemical.com

Catalog no.: 19-011

Product name: 6-Chloro-3(4'-chlorophenyl)-4,7dimethylcoumarin

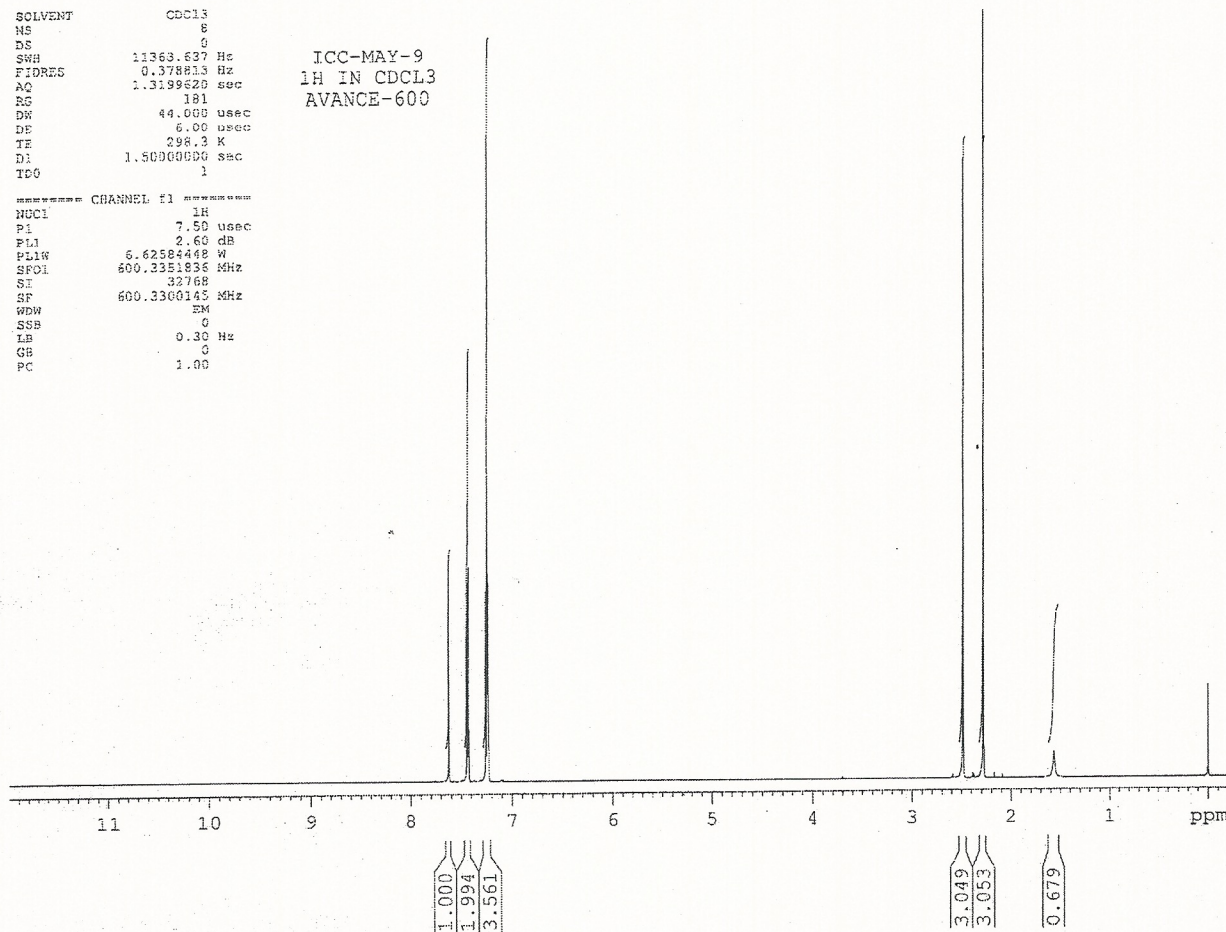
Lot No.: 98068



SOLVENT CDCL3
NS 8
DS 0
SWH 11363.637 Hz
FIDRES 0.378813 Hz
AQ 1.3199620 sec
RG 181
DW 44.000 usec
DE 6.00 usec
TE 298.3 K
DI 1.50000000 sec
TD 1

ICC-MAY-9
1H IN CDCL3
AVANCE-600

===== CHANNEL f1 =====
NUC1 1H
P1 7.50 usec
PL1 2.60 dB
PL1W 6.62584448 W
SFO1 600.3351836 MHz
SI 32768
SF 600.3300145 MHz
WBW EM
SSB 0
LB 0.30 Hz
GB 0
PC 1.00





INDOFINE Chemical Company, Inc.

121 Stryker Lane, Bldg. 30, Suite 1 • Hillsborough, NJ 08844 • U.S.A.

Phone: (908) 359-6778 • FAX: (908) 359-1179

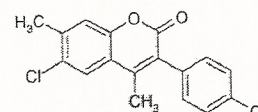
website: www.indofinechemical.com

e-mail: chemical@indofinechemical.com

Catalog no.: 19-011

Product name: 6-Chloro-3(4'-chlorophenyl)-4,7dimethylcoumarin

Lot No.: 98068



SOLVENT CDCL3
NS 8
DS 0
SWH 11363.637 Hz
FIDRES 0.378813 Hz
AQ 1.3199620 sec
RG 181
DM 44.005 usec
DE 6.00 usec
TE 298.2 K
D1 1.5000000 sec
TEC 1

ICC-MAY-9
1H IN CDCL3
AVANCE-600

===== CHANNEL F1 =====
NUC1 1H
P1 7.50 usec
PL1 2.60 dB
PLN 6.62384448 W
SFO1 600.3351536 MHz
SI 32768
SF 600.3300145 MHz
WDW EM
SSB 0
LB 0.30 Hz
GB 0
PC 1.00

